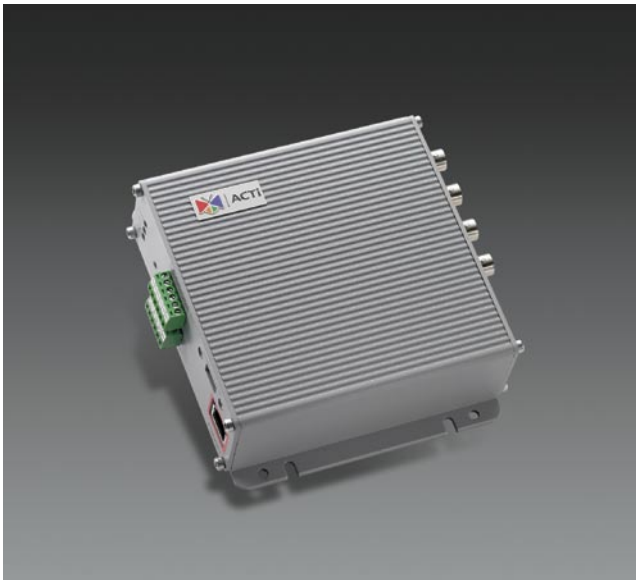


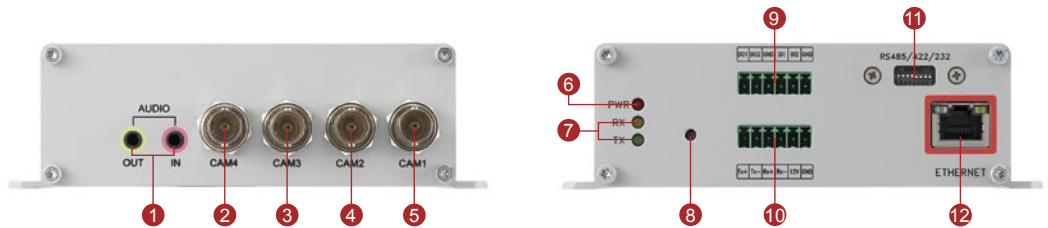


Four-channel MPEG-4 Quad Processor
Integrated Video Server with Two Way Audio

ACD-2000Q

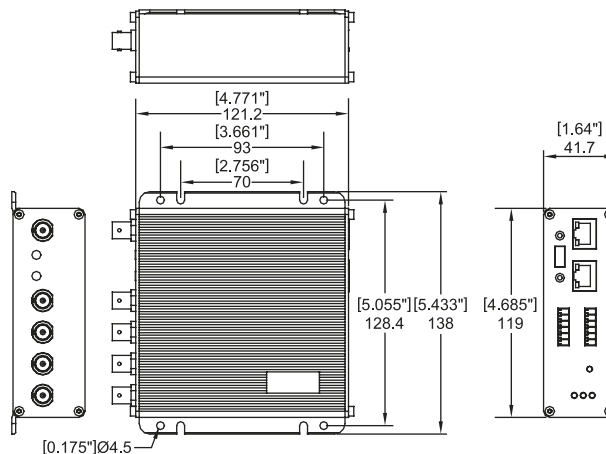


- Selectable MPEG-4 / MJPEG compression
- CIF up to Full D1 resolution at 30/25 FPS
- Multi-stream with variable frame rate in the same compression
- Two way audio supported
- Hardware motion detection, Digital Input / Output
- Optional rackmount kit available
- Real-time quad video
- Monitor output displays full-screen or quad image
- Up to 4 analog video inputs blended into one digital MPEG-4 output stream



- | | | | |
|-------------------------|-------------------------|-----------------------------|------------------------------------|
| 1 Audio Input / Output | 4 CAM2 - Analog Input 2 | 6 Action LED Indicator | 10 Serial Port & DC12V Power Input |
| 2 CAM4 - Analog Input 4 | 5 CAM1 - Analog Input 1 | 7 Serial Port LED Indicator | 11 Serial Port Setting |
| 3 CAM3 - Analog Input 3 | | 8 Reset Button | 12 Ethernet Port |
| | | 9 Digital Input / Output | |

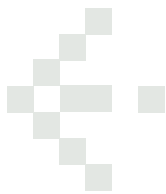
DIMENSION DIAGRAM



Unit: mm [inch]

KCL
Kane Computing Ltd
7 Theatre Court, London Road,
Northwich, Cheshire, CW9 5HB, UK.
Tel: +44(0)1606 351006
Fax: +44(0)1606 351007/8
Email: sales@kanecomputing.com
Web: www.kanecomputing.co.uk





PRODUCT SPECIFICATION

Video Compression

Compression	MPEG-4 SP, MJPEG selectable
Picture Resolution	<ul style="list-style-type: none"> Quad Mode : Full D1 (720x480 in NTSC, 720x576 in PAL) Sequential Mode (per channel) : Full D1 (720x480 in NTSC, 720x576 in PAL) Single Mode (per channel) : Full D1 (720x480 in NTSC, 720x576 in PAL) CIF (352 x 240 in NTSC, 352 x 288 in PAL)
Bit Rate	28K ~ 3M bps
Image Frame Rate	<ul style="list-style-type: none"> Quad Mode : 30 fps at full D1 resolution (NTSC) 25 fps at full D1 resolution (PAL) Sequential Mode : 30 fps at full D1 resolution (NTSC) 25 fps at full D1 resolution (PAL) Single Mode : 7 fps at full D1 resolution (NTSC / PAL) 15 fps at CIF resolution (NTSC) 12 fps at CIF resolution (PAL)
Multi-stream	Up to 2 configurable frame rate/bit rate streams for preview and recording

Video Input

Composite Input	4, CVBS, 1.0Vp-p with 75Ω loading, BNC connector
-----------------	--------------------------------------------------

Audio Input

Compression	8 kHz, Mono, PCM
Audio Line Input	Unbalanced, 1.4 Vp-p, 1Vrms, 3.5 mm Phone Jack

Audio Output

Compression	8 kHz, Mono, PCM
Audio Line Output	Unbalanced, 1.4 Vp-p, 1Vrms, 3.5 mm Phone Jack

Alarm

Input	2, TTL, terminal block
Output	2, TTL, terminal block

Remote Control

Serial Port	RS-485: half duplex, terminal block RS-422: full duplex, terminal block RS-232: full duplex, terminal block
-------------	-------------------------------------------------------------------------------------------------------------------

External I/O

Reset Button	Factory default
LED	Power / serial port / network status

Network

Ethernet Port	Ethernet (10/100 Base-T), RJ-45 connector
Protocol	TCP, UDP, IP, HTTP, DHCP, PPPoE, RTP, RTSP, FTP, SMTP, DNS, DDNS, NTP, ICMP, IGMP, ARP

Software

Web Browser	Microsoft Internet Explorer 6.0 or above
SDK	ACTi SDK-10000
Security	Password protection: configured by the administrator

Operating

Temperature	-10 °C ~ 50 °C (14 °F ~ 122 °F)
-------------	----------------------------------

Power

Power Requirement	DC 12 V ± 10%
Power Consumption	5.0 W

Physical

Dimensions	119 x 41.7 x 122 mm (4.69" x 1.65" x 4.81")
Weight-Net	430 g (0.95 lb)

ORDERING INFORMATION

Model Name	Description
ACD-2000Q	Four-channel MPEG-4 Quad Processor Integrated Video Server with Two Way Audio

DISPLAY MODES

Display Mode	Content	Frame Rate	Resolution	Video Stream
Quad		30/25 FPS (NTSC/PAL)	D1 only	1 stream, quad view
Sequential		30/25 FPS (NTSC/PAL)	D1 only	1 stream at a time
Single		7 FPS	D1	4 independent streams
		15/12 FPS (NTSC/PAL)	CIF	4 independent streams

* All specifications are subject to change without notice.
* All brand names and registered trademarks are the property of their respective owners.