

---

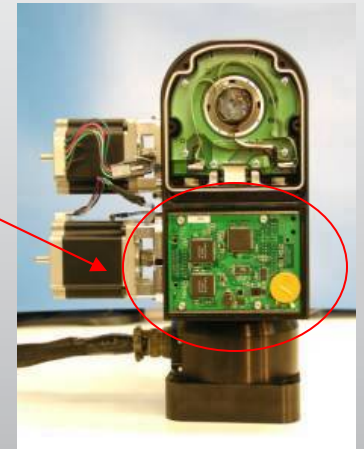
# E-Series Pan/Tilt Models

Smarter. Faster. Expanded

*(preview)*

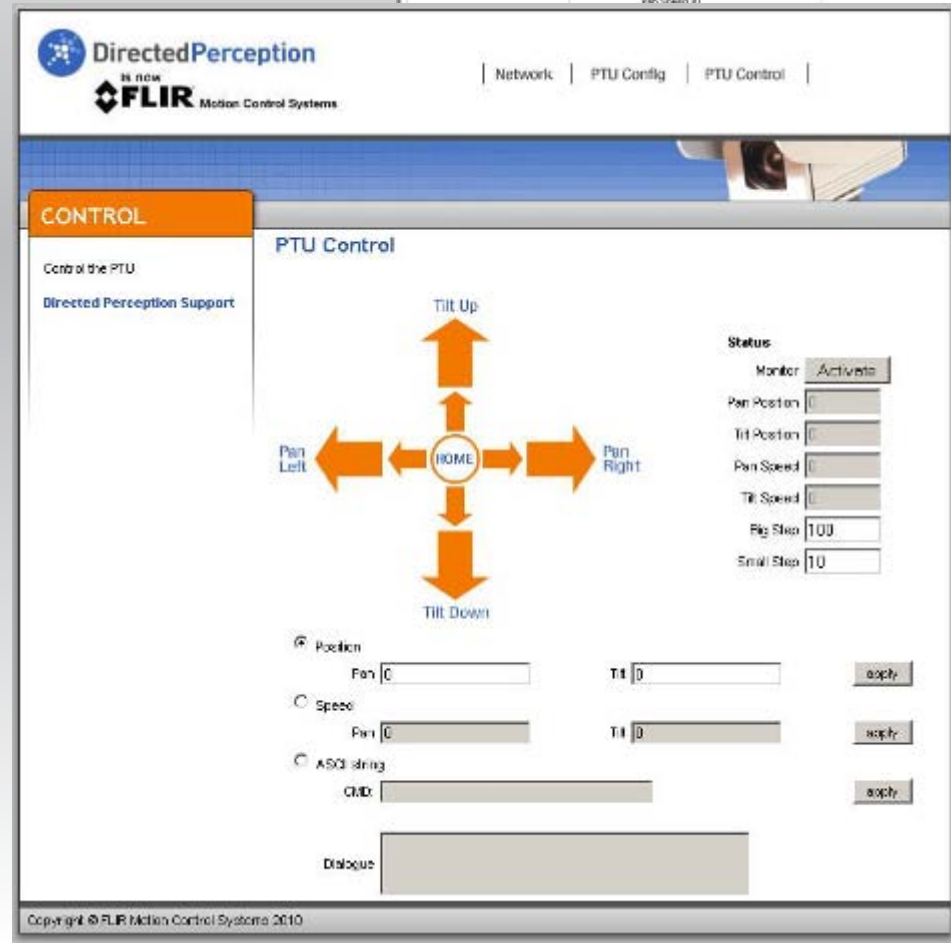
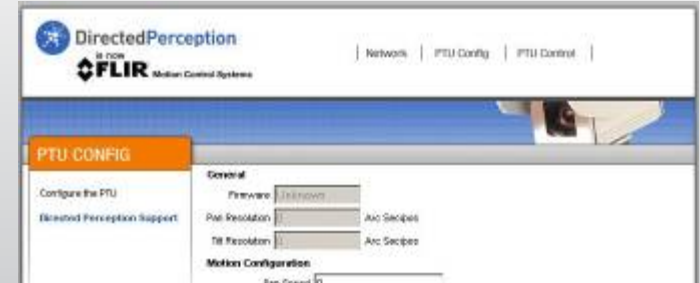
# E-Series – Sneak Preview

- 3<sup>rd</sup> generation control electronics providing several new capabilities:
  - Integrated Ethernet
  - Higher performance
  - Expanded I/O
  - Higher voltage/current motor drive subsystem
- E-Series Features
  - Higher torque
  - Higher top speeds
  - Improved command rates (60/sec => 200+/sec)
  - Integrated ISM (starting with ISM 2.0)
  - Integrated GPM (future)
  - Built-in Ethernet/Web Interface
  - Expanded Payload I/O (serial, digital)
  - Programmable range of motion
  - Reduced calibration time/motion
- E-Series available for: PTU-D48, PTU-D100, PTU-D300 family models



# E-Series IP/Web Interface

- Built-in graphical web interface for:
  - pan-tilt control
  - Configuration parameters
  - Troubleshooting
- IP command interface
  - Pan-tilt control
  - Pan-tilt configuration



# PTU-D48 E-Series

**NEW!**

Low-cost, integrated pan-tilt for mid-range payloads to 15 lbs.

|                    |   |
|--------------------|---|
| Max Payload        | <b>15 lbs.</b>  |
| Speed (pan)        | <b>Up to 100 °/sec</b>  |
| Resolution (pan)   | <b>Up to 0.003°</b>   |
| Weight             | <b>~11 lbs.</b>   |
| Weatherization     | <b>IP67</b>   |
| Payload Mount      | <b>Top, side, dual-side</b>   |
| Features / Options | <b>Internal wiring,<br/>Rugged joystick<br/>Slip-Ring (Nx360)<br/>Integrated Ethernet</b> |



# PTU-D100 E-Series

**NEW!**

Low-cost, integrated pan-tilt for mid-range payloads to 25 lbs.

|                    |  |
|--------------------|--|
| Max Payload        | <b>25 lbs.</b>                                 |
| Speed (pan)        | <b>Up to 120 °/sec</b>                         |
| Resolution (pan)   | <b>Up to 0.0075°</b>                           |
| Weight             | <b>17 lbs.</b>                                 |
| Weatherization     | <b>IP67</b>                                    |
| Payload Mount      | <b>Top, side, dual-side</b>                    |
| Features / Options | <b>Nx360, inertial stabilization, joystick</b> |



# PTU-D300 E-Series

**NEW!**

Low-cost, integrated pan-tilt for mid-range payloads to 70 lbs.

|                    |   |
|--------------------|---|
| Max Payload        | <b>70 lbs.</b>  |
| Speed (pan)        | <b>Up to 50-100 °/sec</b>   |
| Resolution (pan)   | <b>Up to 0.006°</b>   |
| Weight             | <b>26 lbs.</b>  |
| Weatherization     | <b>IP67</b>   |
| Payload Mount      | <b>Top, side, dual-side</b>   |
| Features / Options | <b>Integrated Ethernet, Nx360, inertial stabilization, 20A power pass-through</b> |

# E-Series – Compatibility

---

The E-Series models include a larger base and taller height and a new 32-pin base connector and pin out.

- PL01/PL02 wiring pin outs for the payload connector are preserved.
- The existing ASCII and binary command interfaces for the DP command set are fully supported for E-Series units (with higher command rates; and new semantics for user-programmed motion limits).

FLIR MCS has taken great care to ensure a smooth a simple path for existing OEM customers to migrate to the E-Series units. The following facilitate migration and integration to E-Series pan-tilt models:

- Same application command interface (ASCII and binary)
- Larger base connector (32-pin) providing universal base wiring configuration
  - Adapter cable 19-32 pin available to support migration
  - 32-pin breakout cable available
- Dimensions – taller, larger base
  - Same mounting pattern
- Same payload connector/pin outs (PL01, PL02)
- Overlapped availability of E-Series and current models