

EMBEDDED



WORKSTATION



SERVER



Sourcery G++, a complete software development environment based on the GNU Toolchain, is the best choice for software engineers, operating system vendors, semiconductor companies, and device manufacturers. With Sourcery G++, you get the benefits of an open-source solution with the quality and convenience that only CodeSourcery can provide.

The right toolchain for the job is **Sourcery G++™**

Superior GNU Toolchains—Straight from the Source

Complete

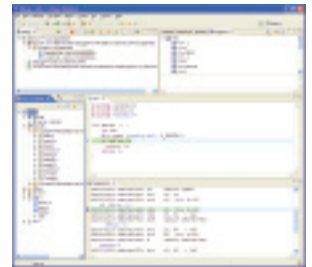
Get everything you need to build your application. Sourcery G++ contains an enhanced Eclipse-based integrated development environment and the entire GNU Toolchain: optimizing ISO C/C++ compilers, a flexible assembler, a powerful linker, runtime libraries, and a source- and assembly-level debugger. Sourcery G++ supports most CPUs and operating systems.

Reliable

Count on CodeSourcery. Sourcery G++ includes CodeSourcery's latest enhancements to the GNU Toolchain. CodeSourcery validates Sourcery G++ by running hundreds of thousands of tests in its extensive hardware lab. CodeSourcery also provides comprehensive support.

Convenient

Get started today. You can be up and running in minutes with the Sourcery G++ graphical installer. And the Sourcery G++ IDE makes compiling and debugging your applications a snap.



Choose the Sourcery G++ Edition That's Right for You

Sourcery G++ Professional Edition includes unlimited support directly from the CodeSourcery engineers who have contributed thousands of enhancements to the GNU Toolchain since 1997. Get quick responses to your questions through CodeSourcery's convenient on-line issue tracker.

You need a Sourcerer in your corner!

Sourcery G++ Personal Edition is an affordable solution for the individual developer or small enterprise. Get the quality and convenience of Sourcery G++ and free updates for one year!

About CodeSourcery

CodeSourcery builds software tools that enable its customers to get the most out of hardware platforms ranging from embedded devices to supercomputers. CodeSourcery's products and services deliver on the promise of open-source software and open standards.



Kane Computing Ltd
7 Theatre Court, London Road,
Northwich, Cheshire, CW9 5HB, UK.
Tel: +44(0)1606 351006
Fax: +44(0)1606 351007/8
Email: sales@kanecomputing.com
Web: www.kanecomputing.co.uk

Sourcery G++ Features

Sourcery G++ is a complete software development environment based on the GNU Toolchain including:

- Enhanced Eclipse-based integrated development environment
- Optimizing ISO C/C++ compilers
- Flexible macro-assembler
- Powerful linker with complete control of section placement
- C/C++ runtime libraries for GNU/Linux and embedded systems
- Source- and assembly-level debugger
- Easy-to-use graphical installer
- Comprehensive user documentation in HTML and PDF

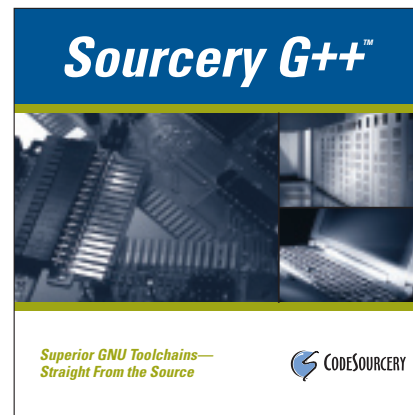
Supported Configurations

Supported host systems

- GNU/Linux®
- Microsoft Windows®
- Sun Solaris®

Supported target systems

- ARM®, XScale®
- ColdFire®
- IA32, AMD64®, EM64T®
- MIPS®
- PowerPC®
- SPARC®
- And more!



CodeSourcery frequently adds support for new hardware configurations. If you don't see the configuration you need, check our website for the latest list or ask us about our custom engineering services.

Additional Services

If you are an operating system vendor, semiconductor company, or device manufacturer, contact CodeSourcery for information about porting Sourcery G++ to your target system. CodeSourcery can optimize Sourcery G++ for your processor, add support for your flash memory, and take advantage of your hardware debugging facilities. Both you and your customers can benefit from CodeSourcery's comprehensive support.



CODESOURCERY

(888) 776-0262

www.codesourcery.com/store
sales@codesourcery.com