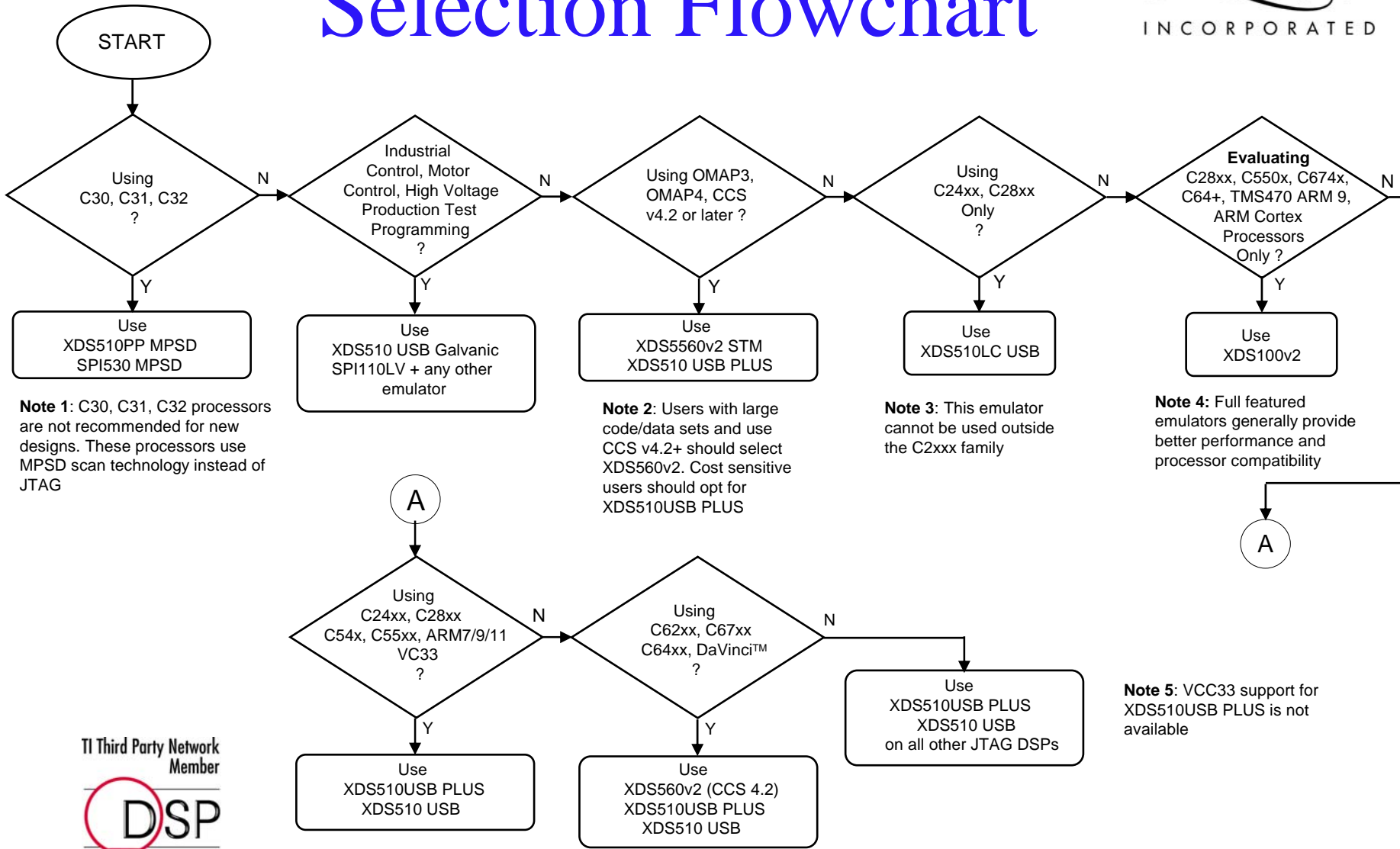


Selection Flowchart



Note 1: C30, C31, C32 processors are not recommended for new designs. These processors use MPSPD scan technology instead of JTAG

Note 2: Users with large code/data sets and use CCS v4.2+ should select XDS560v2. Cost sensitive users should opt for XDS510USB PLUS

Note 3: This emulator cannot be used outside the C2xxx family

Note 4: Full featured emulators generally provide better performance and processor compatibility

Note 5: VCC33 support for XDS510USB PLUS is not available