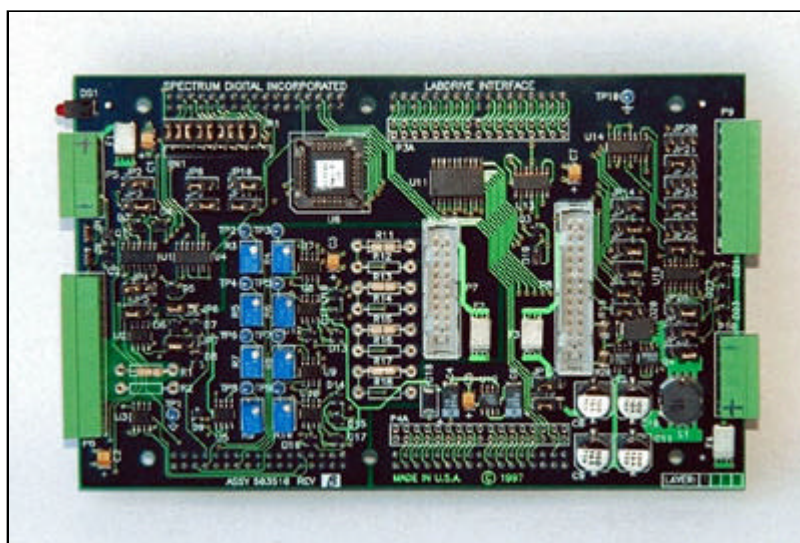




Labdrive Interface Module (requires 1 inverter module)



Part #: 701017



Labdrive Interface Module

**Hardware Features
General**

- Compatible with TI's F240 EVM and Spectrum Digital's EVM320F240
- Supports 3 phase AC Induction/DC Brushless and custom designed inverters, including Spectrum's Labdrive Inverter
- Support algorithms and demonstration code developed by TI

Inverter Analog Interface

- 4 Analog input channels
- Differential/single ended
- Adjustable gain and offset for each input
- Input range +/- 10V maximum
- Drive output power (+5 or +12V selectable)
- 1 Fault input

Expansion

System I/O

- Optical encode interface: A,B and Index channel, differential or single ended
- 3 Inputs for Hall Effect sensors
- 2 Limit switch inputs, 1 driver enable input
- 2 General purpose outputs
- 1 Single ended analog Tachometer input
- 1 Differential/single ended input for control voltage (velocity/torque)
- 2 Unipolar digital outputs (0-5V)

Inverter Digital Interface

- 6 PWM drive outputs
- 1 Power factor correction drive output
- 1 Brake driver output
- 1 Driver enable output
- 1 Driver reset output
- 1 Fault input
- Drive output power (+5V or +12V selectable)
- Phase fault protection