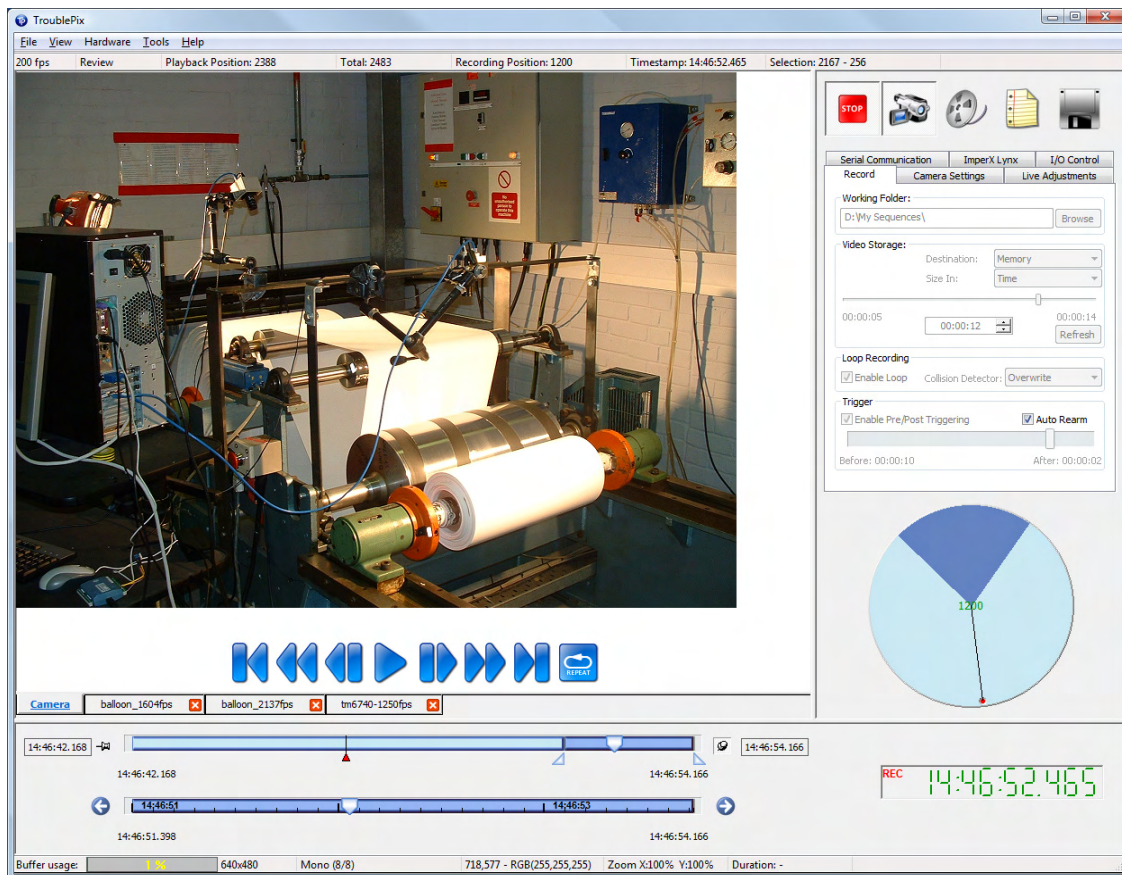


# TroublePix

**Digital video recording software for troubleshooting,  
monitoring and event capture**  
**Use in the factory, laboratory or outdoors**



- **Compatible with GigE, Firewire A and B and CameraLink cameras from many manufacturers**
- **From 60 to 1000 frames per seconds**
- **From 640x480 up to 4Kx4K in GigE, Firewire A and B or CameraLink mode.**



# TroublePix

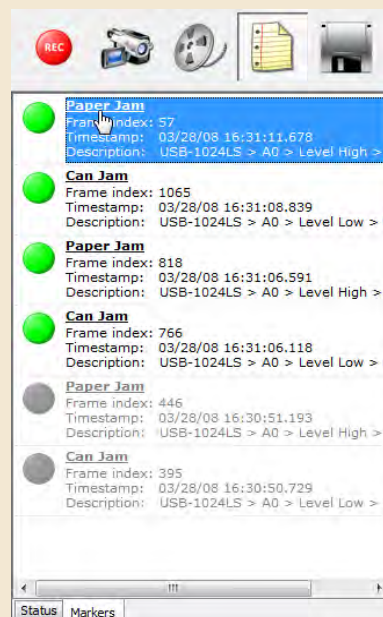
## Acquire, View and Review

- Use in the factory, laboratory or outdoors
- Compatible with laptops and portable PCs
- Optical fiber for covering long distances between recording station and camera
- Easy to use GUI for factory floor applications
- Specifically designed for non technical operators.

- Full triplex functionality : record video, see live from camera and playback while recording
- Supports a wide choice of GigE Vision, Firewire A and B, analog, Cameralink or USB2 cameras
- Variable frame rate from 1 to 2000 images/sec
- 640x480 resolution, HD or more, monochrome or color

### Multiple Event Markers :

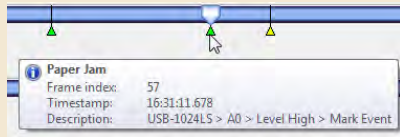
**Monitors multiple I/O sources, capturing external events and marking the associated frames in the sequence. Keeps a record of all markers in a notebook.**



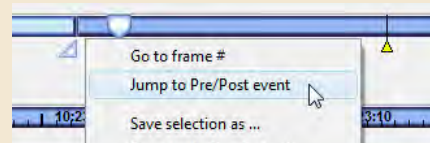
# TroublePix

## Acquire, View and Review

### Event marker :

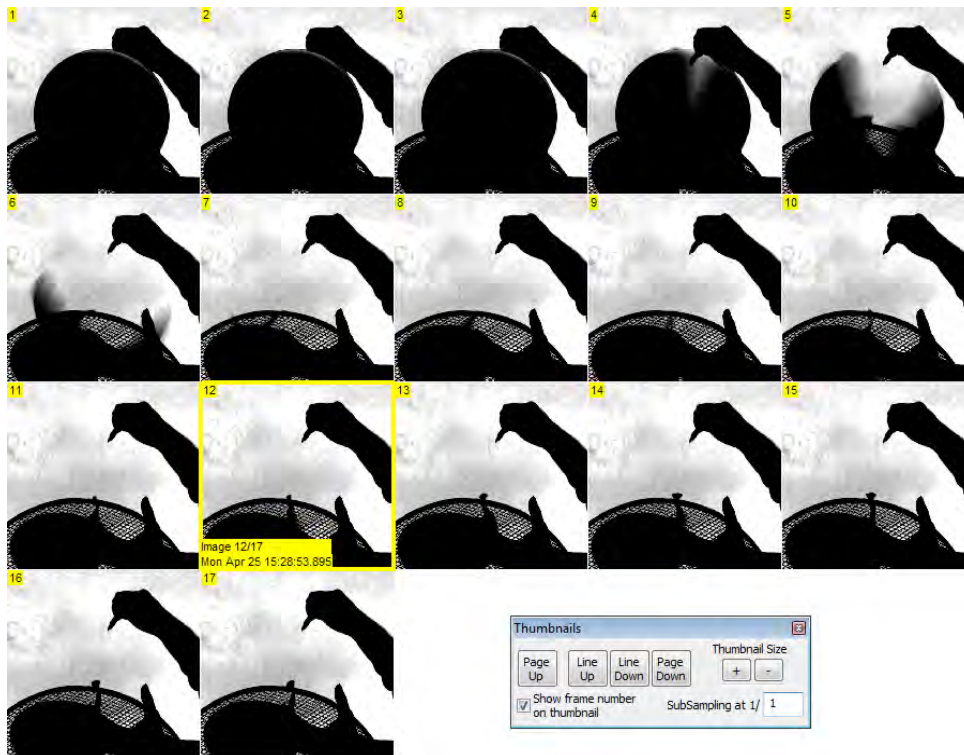


Mark a specific frame upon receipt of trigger



Quick access to event frame.

### Thumbnail viewing mode

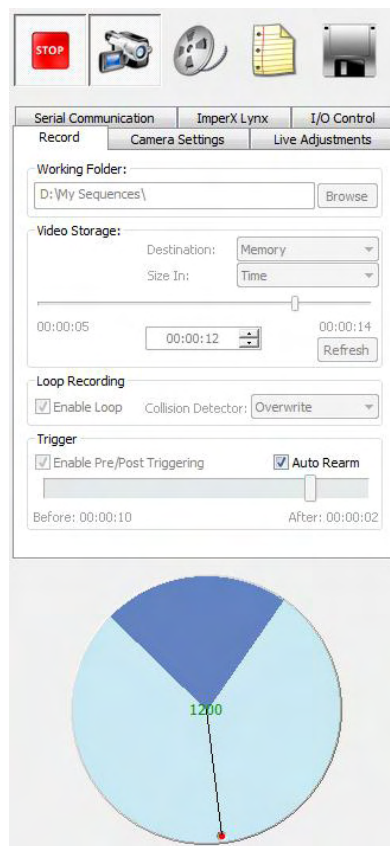


# TroublePix

## Pre Post Triggering

- Set pre-post triggering mode using mouse
- Set time to be looped before receipt of trigger
- Set time to be looped after receipt of trigger
- Save sequence
- Reset trigger and start acquiring until following trigger.

### Loop to disk or to RAM



Loop based on time or  
number of frames.



**Kane Computing Ltd**  
7 Theatre Court, London Road,  
Northwich, Cheshire, CW9 5HB, UK.  
Tel: +44(0)1606 351006  
Fax: +44(0)1606 351007/8  
Email: sales@kanecomputing.com  
Web: www.kanecomputing.co.uk

**Turnkey systems available**