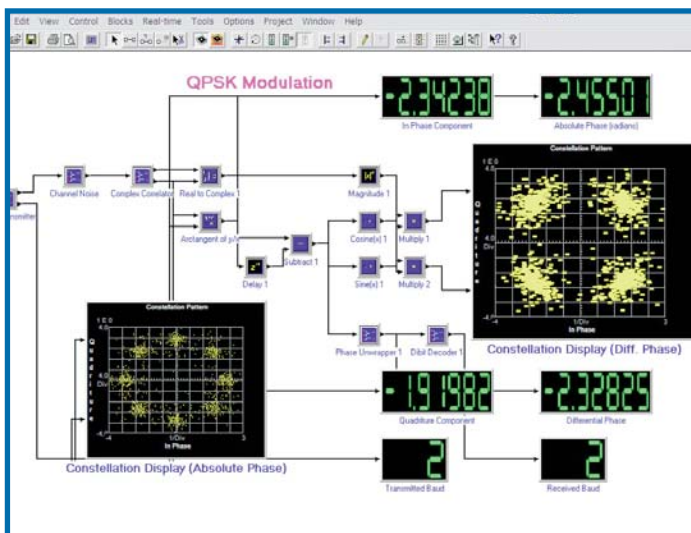


RIDE – For Better DSP Development

RIDE is a graphical programming tool that supports the design, implementation, and analysis of real-time DSP-based algorithms and systems. Developing with RIDE is simple – just create a block diagram of your DSP application and run on the DSP without need of any additional compilers. Block functions are selected from a menu and connected to establish dataflow. Adjust run-time parameters from pop-up dialog boxes and execute the entire algorithm on the DSP with the press of a single button. For supported target hardware, RIDE programs onboard flash memory directly. Throughout development, RIDE provides complete interactive control and observation of DSP designs.



Simplified Development

Focus more on your ideas and less on the numerous low-level details involved in implementing DSP code.

Rapid Prototyping

Develop your application in minutes on leading DSP evaluation hardware.

Open Software Environment

Build blocks from your own C or Assembly source and use them along with hundreds of block functions included in RIDE block diagrams.

Interoperate with Standard DSP Tools

While RIDE does not require other development tools to create DSP applications, RIDE supports DSP tools such as Texas Instruments Code Composer Studio (CCS) and Analog Devices VisualDSP++. For advanced users, RIDE Enterprise Edition includes C source code generation.

RIDE[®] Graphical Programming for DSP

Document: HSMK8010
P/N: 351129A-01

hyperception.com/RIDE

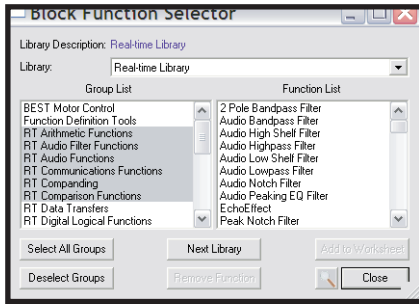
Real-time Integrated Development Environment for DSP

- *Faster DSP code development*
- *Rapid prototyping of products and systems*
- *Scalable with integration of leading DSP design tools*
- *Direct support for DSP development hardware*
- *Real-world integration with test and measurement*

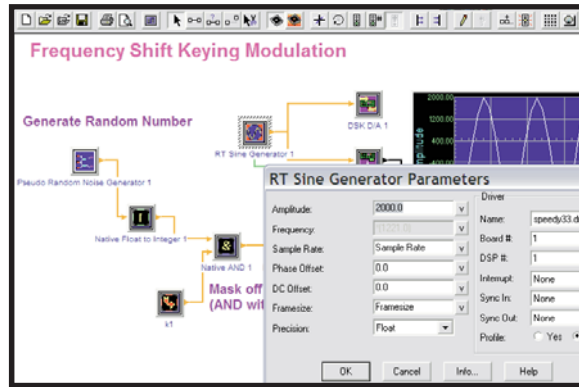
HYPERCEPTION
A NATIONAL INSTRUMENTS COMPANY

Create Your DSP Application Faster and Easier

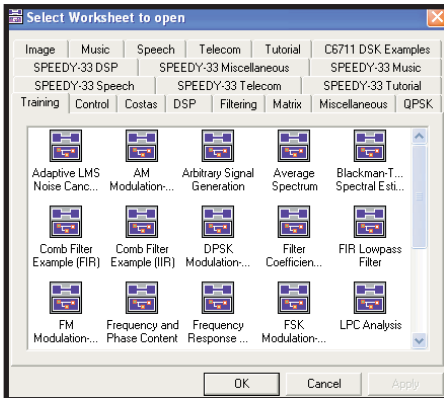
RIDE simplifies DSP code development. To develop your application, select block functions from a pull-down menu and connect with the dataflow wiring tool. The blocks are linked and downloaded on your DSP platform for immediate execution. RIDE includes a wide variety of functions to address virtually any DSP application.



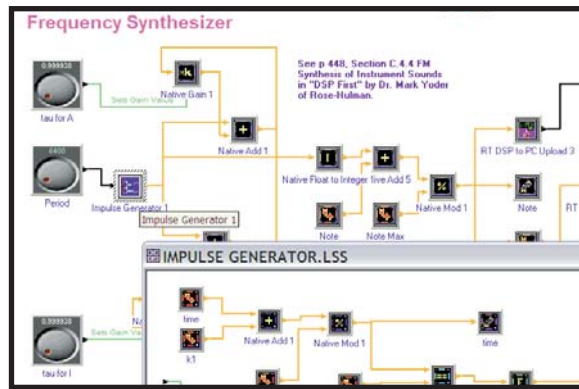
Block Selector – Search from hundreds of block functions included with RIDE.



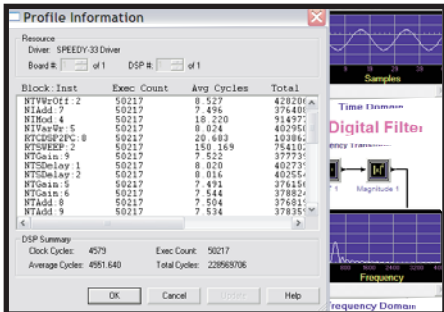
Targeting Your Diagram – Adjust runtime parameters from pop-up dialog boxes, then press the 'Go' toolbar button.



Reference Templates – Choose from a variety of relevant templates and examples in many areas.



Hierarchy – Create new components from built-in blocks for true N-level hierarchy.



Code Profiling – Monitor algorithm execution time for the DSP using the block profile function.

For more detailed information, please contact:

Kane Computing Ltd
 7 Theatre Court, London Road,
 Northwich, Cheshire, CW9 5HB, UK
 Tel: +44(0)1606 351006 - Fax: +44(0)1606 351007/8
 www.kanecomputing.com - sales@kanecomputing.com

HYPERCEPTION
 A NATIONAL INSTRUMENTS COMPANY