



## COMPUTER SOFTWARE FOR VISUAL INSPECTION AND HIGH PRECISION MEASUREMENT

- REAL-TIME FULL-COLOR IMAGE ACQUISITION
- SUPPORTS A WIDE RANGE OF VIDEO ACQUISITION DEVICES (BOTH ANALOG AND DIGITAL)
- GENERAL IMAGING AND INSPECTION
- IMAGE ARCHIVING AND RETRIEVAL
- VERY BROAD SET OF HIGH-ACCURACY MEASUREMENT TOOLS
- IMAGE PRINTING
- IMAGE EXCHANGE AND TRANSMISSION
- IMAGE ANNOTATION



- IMAGE RETOUCHING & ENHANCEMENT
- IMAGE PROCESSING
- IMAGE COMPARISON, OVERLAY AND DIFFERENCING
- IMAGE ANALYSIS
- IMAGE BLENDING ("PERFECT FOCUS" TOOL)
- CAD FILE LIVE IMAGE OVERLAY "COMPARATOR" FEATURE
- HIGH-PRECISION MANUAL AND AUTOMATED MEASUREMENTS
- MEASUREMENT STATISTICS AND GRAPHICS
- COUNTING & SIZING OF PARTICLES, GRAINS, CELLS AND OTHER DISCRETE OBJECTS
- IMAGE DATA COLLECTION
- VIDEO SEQUENCE CAPTURE AND ANALYSIS
- AUTO-MOSAIC (I.E. IMAGE "STITCHING")
- FULL FRAME-RATE VIDEO CAPTURE, VIDEO ARCHIVING AND RETRIEVAL (".AVI" FILE FORMAT) AND FRAME-BY-FRAME PLAYBACK AND ANALYSIS
- SUPPORT FOR MOTORIZED OPTICS AND COMPUTER-CONTROLLED ILLUMINATION
- IMAGE DATABASING AND EXCHANGE
- GENERATE ILLUSTRATED INSPECTION AND MEASUREMENT REPORTS

VisionGauge® is a powerful and easy-to-use software product that will let you capture, manipulate, analyze, store and output images, video and data. It can be used to:

- Carry out a broad range of advanced imaging and visual inspection tasks
- Carry out many different types of reliable and repeatable high precision measurements
- Compute measurement statistics, collect data and create graphs and charts
- Count and measure discrete objects such as particles, grains and cells

VisionGauge® is a true 32-bit application that runs under Windows 95™ / 98™ / NT™ / 2000™ / XP™. It has a simple and intuitive Windows™ interface and is used for industrial production, quality control, training and laboratory applications.

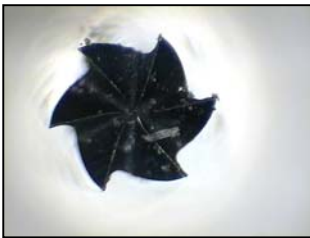
VisionGauge® is very competitively priced and can be supplied as a complete inspection workstation, including computer, optics, lighting, camera and positioning and focusing mechanism, or as a board level and software product.

VisionGauge® includes a full year membership to the renewable *VisionGauge® Annual Support and Update Program*, which entitles you to receive free software updates and unlimited support by phone, fax and email.

VisionGauge® can also be customized – quickly and cost-effectively - to meet the requirements of your specific application.

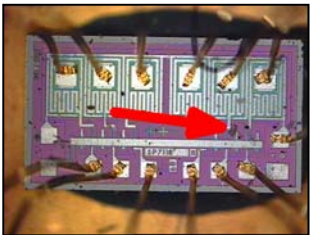
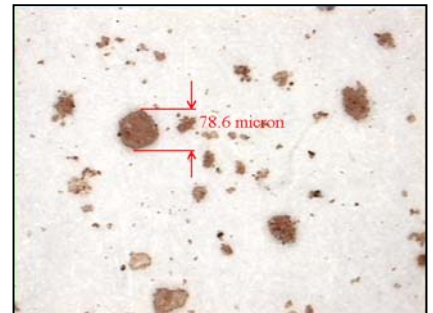


## COMPUTER SOFTWARE FOR VISUAL INSPECTION AND HIGH PRECISION MEASUREMENT



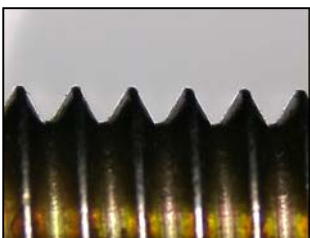
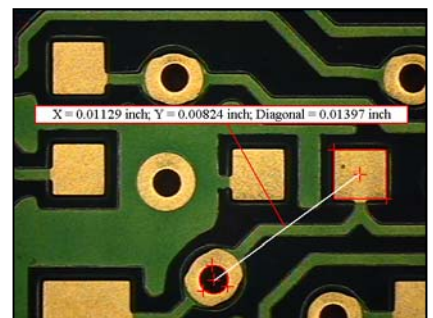
## Greater measurement accuracy

VisionGauge® uses advanced edge-detection technology that produces sub-pixel accurate measurements, increases measurement repeatability and virtually eliminates operator-dependent measurement error.



## Save time

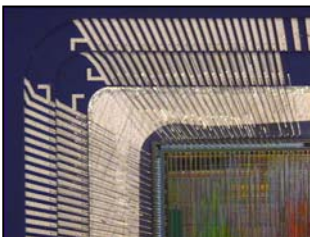
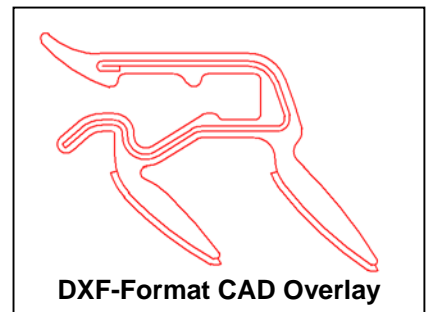
With VisionGauge® you can easily acquire high-resolution full-color images and quickly build complete inspection and measurement reports.



VisionGauge® also lets you quickly and easily archive & retrieve images and accompanying data.

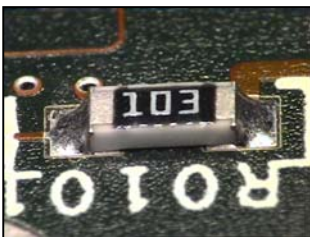
## Save money

With VisionGauge® you can produce high quality printed images and reports on demand, very economically.

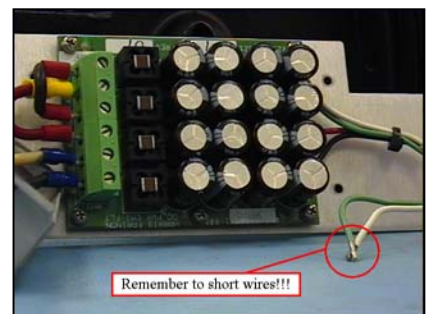


## Increase your productivity

In just moments, you can easily create detailed, accurate reports that were just not practical without VisionGauge®.



Share images, data and reports with customers, suppliers and coworkers... world-wide, almost instantly. Compare archived images to a live image or other archived images.



**Kane Computing Ltd**  
7 Theatre Court, London Road,  
Northwich, Cheshire, CW9 5HB, UK.  
Tel: +44(0)1606 351006  
Fax: +44(0)1606 351007/8  
Email: sales@kanecomputing.com  
Web: www.kanecomputing.co.uk